



LEADERSHIP FOR SUSTAINABILITY





**“We’ve tried to get people in positions of power to care,
now we’re going to get people who care into
positions of influence”**



+

**100 LEADERS,
30 CITIES,
5 CONTINENTS,**

have already shared their stories,
experiences and wisdom in interviews that
form part of the material for this program.

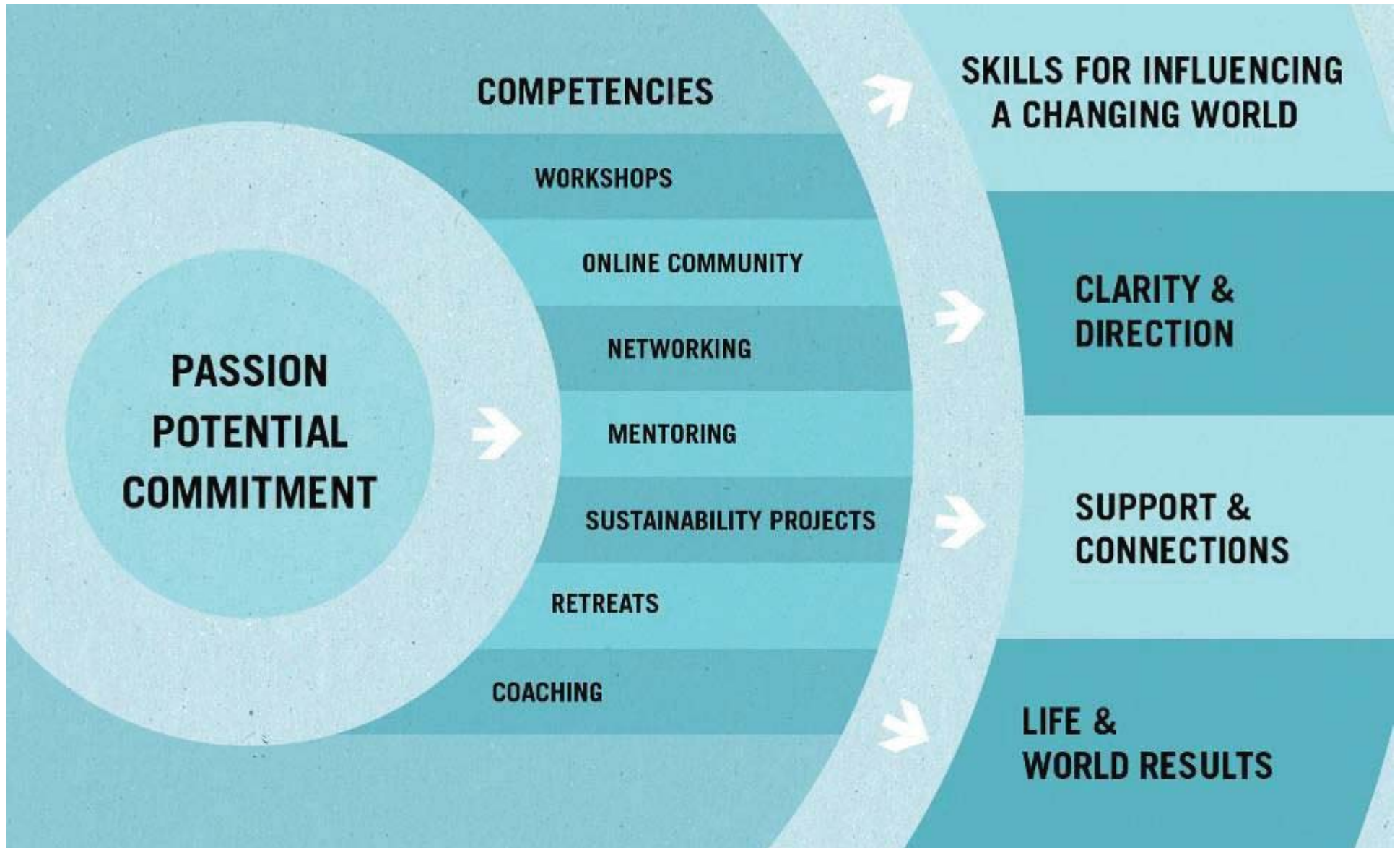




REWIRED.ORG



THE FELLOWSHIP PROGRAM

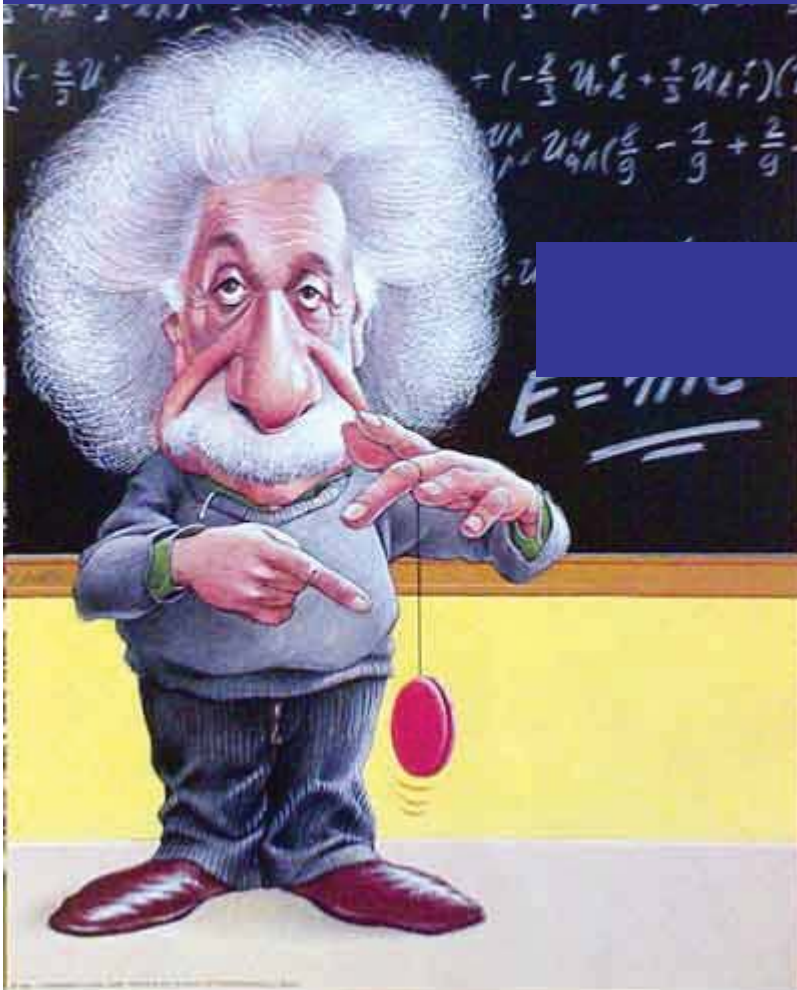




Speaker: Dr Peter Ellyard
Child and Prep for next week



**Clever people know how
to solve problems**

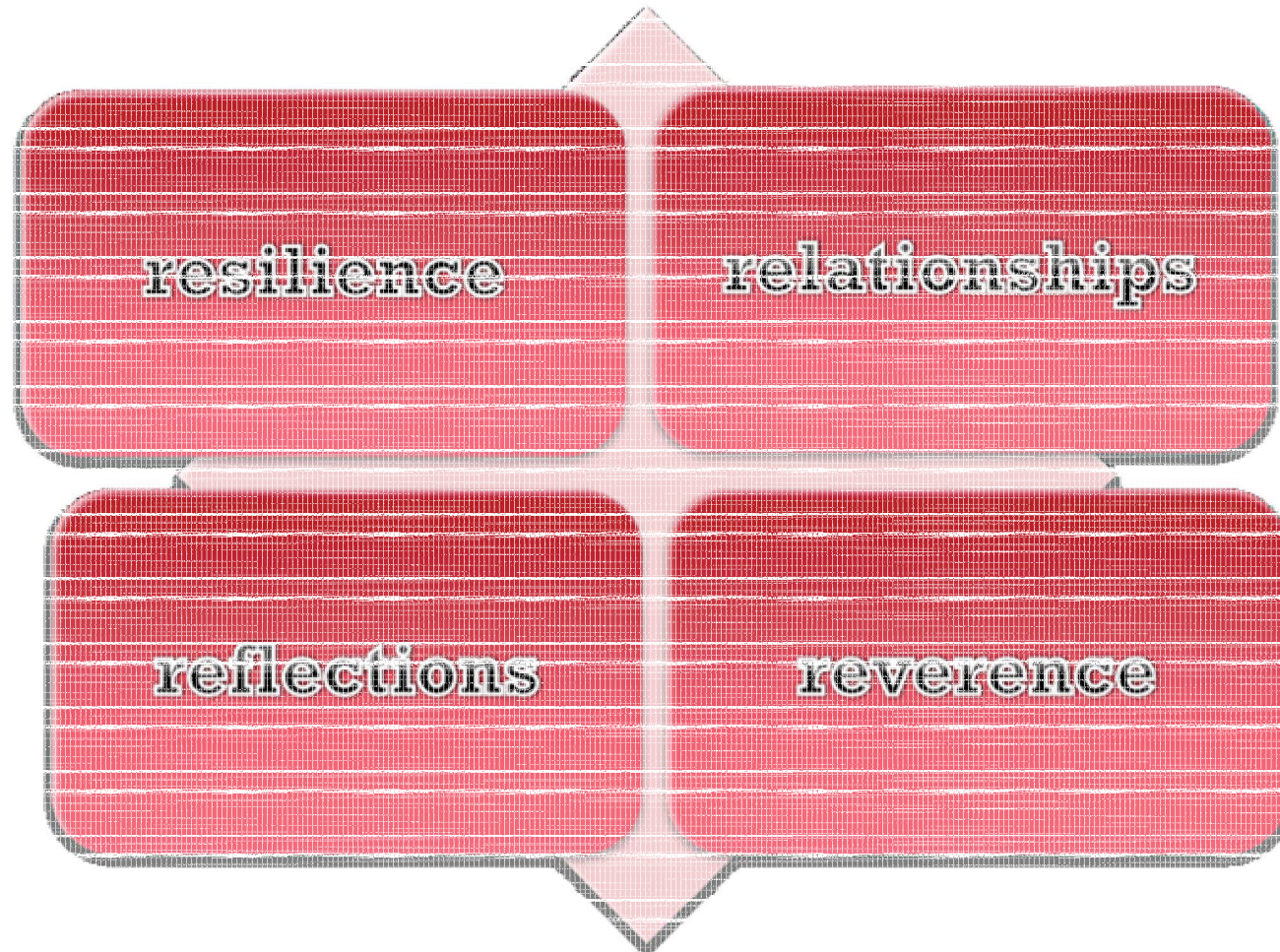


Wise people avoid them!

Attributed to Albert Einstein



+ Foundation for Leadership-
the 4 R's

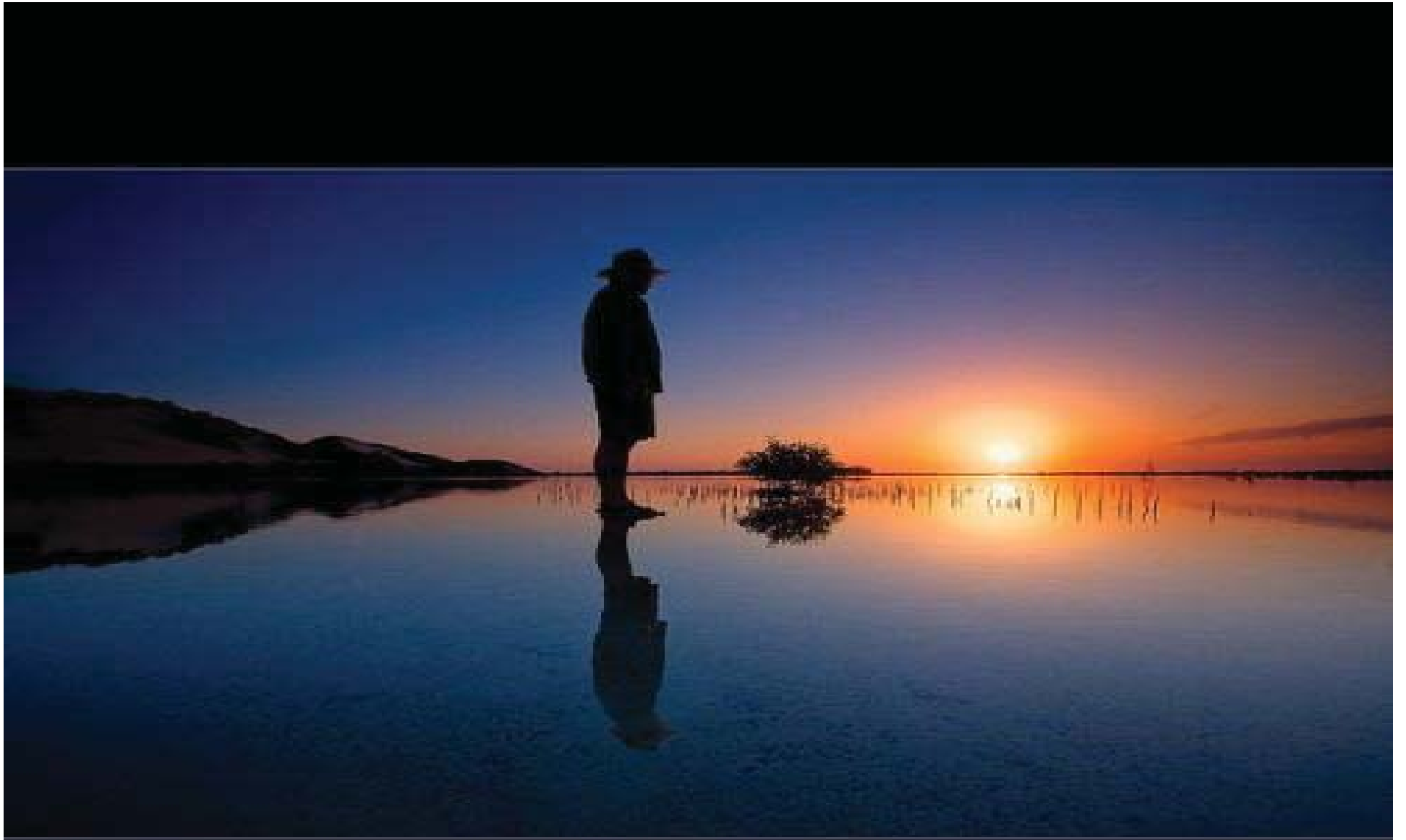


Resilience





Relationships



Reflection

Reverence



Purpose
Know why
you do what
you do



Passion

Know what
you love to
do-

Nothing GREAT
has ever achieved
without enthusiasm

-EMERSON

Potential

Know what you
are good at and
where you can
create the most
change



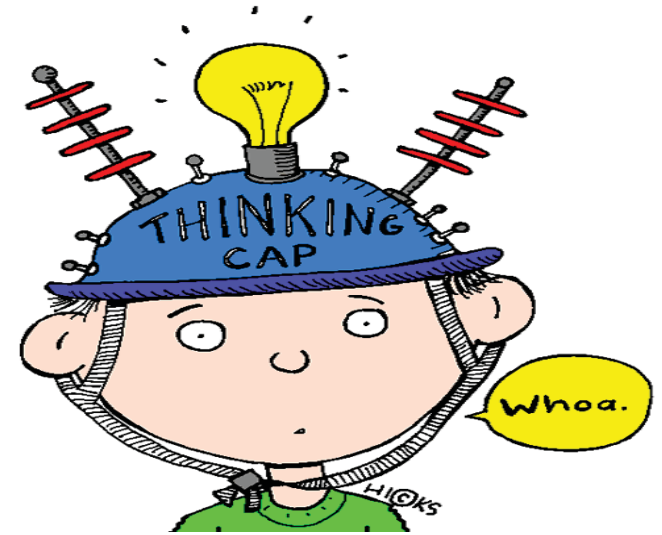
CENTRE FOR
SUSTAINABILITY LEADERSHIP



+
NICHES

+ Thought Leaders

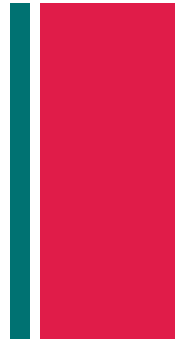
- Critical thinkers
- Great Ideas
- Understand why problems exist
- Moderate to excellent communication



+ *Communicators*

- Creative

- Passion for connecting with people



+ *Social entrepreneurs*



- “Bulldoze” through obstacles
- Passionate about making things happen
- Jack of all trades
- Determined



+ *Sector Greeners*



- Has a sector that feels passionate about
- Has the prerequisites to be accepted by that community
- Can see clearly how their sector could be green
- Strategic thinker
- Determined



+ *Business entrepreneurs*



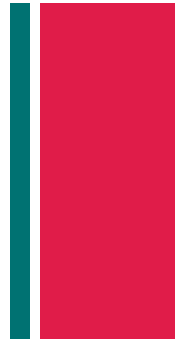
■ Understands markets

■ Passion for business

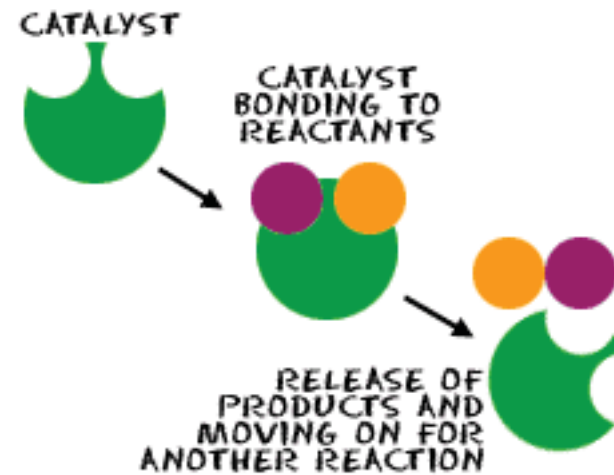
(change can happen from the top,
within or by starting a new business)



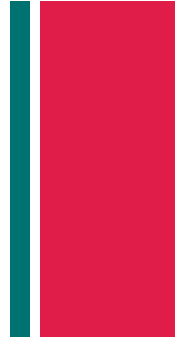
+ *Catalysers*



- Passion to help other achieve
- Emotionally Intelligent
- Strategic



+ *Political Movers and Shakers*

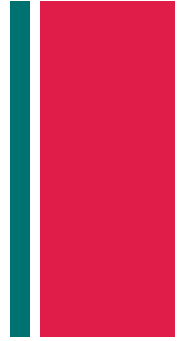


- Have political nous
- Understands power and how to leverage it
- Prepared to compromise



GetUp!
Action for Australia

+ *Organisers*



- Politically astute
- Determined
- Strategic
- Inspiring
- Great people skills



+ *Modellers*

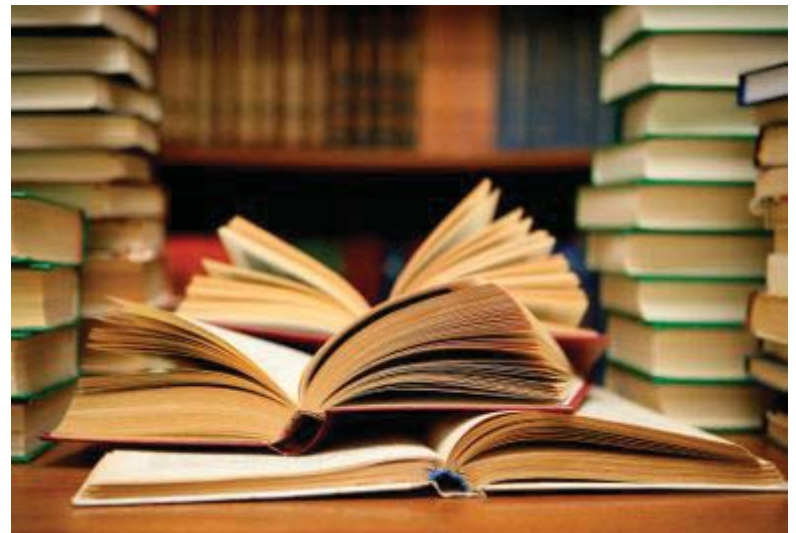


- Visionary
- Can make things happen
- Focused



+ *Researcher Commissioners*

- Strategic
- Has resources
- Understands credibility

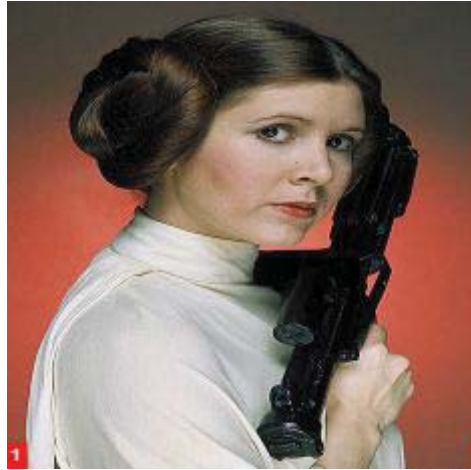


+ Niches

1. Thought Leaders
2. Communicators
3. Social Entrepreneurs
4. Sector Greeners
5. Business Entrepreneurs
6. Catalysers
7. Political Movers and Shakers
8. Organisers
9. Modellers
10. Research Commissioners



VISION



INFLUENCE





WE WANT YOU!

+

So now it is your turn



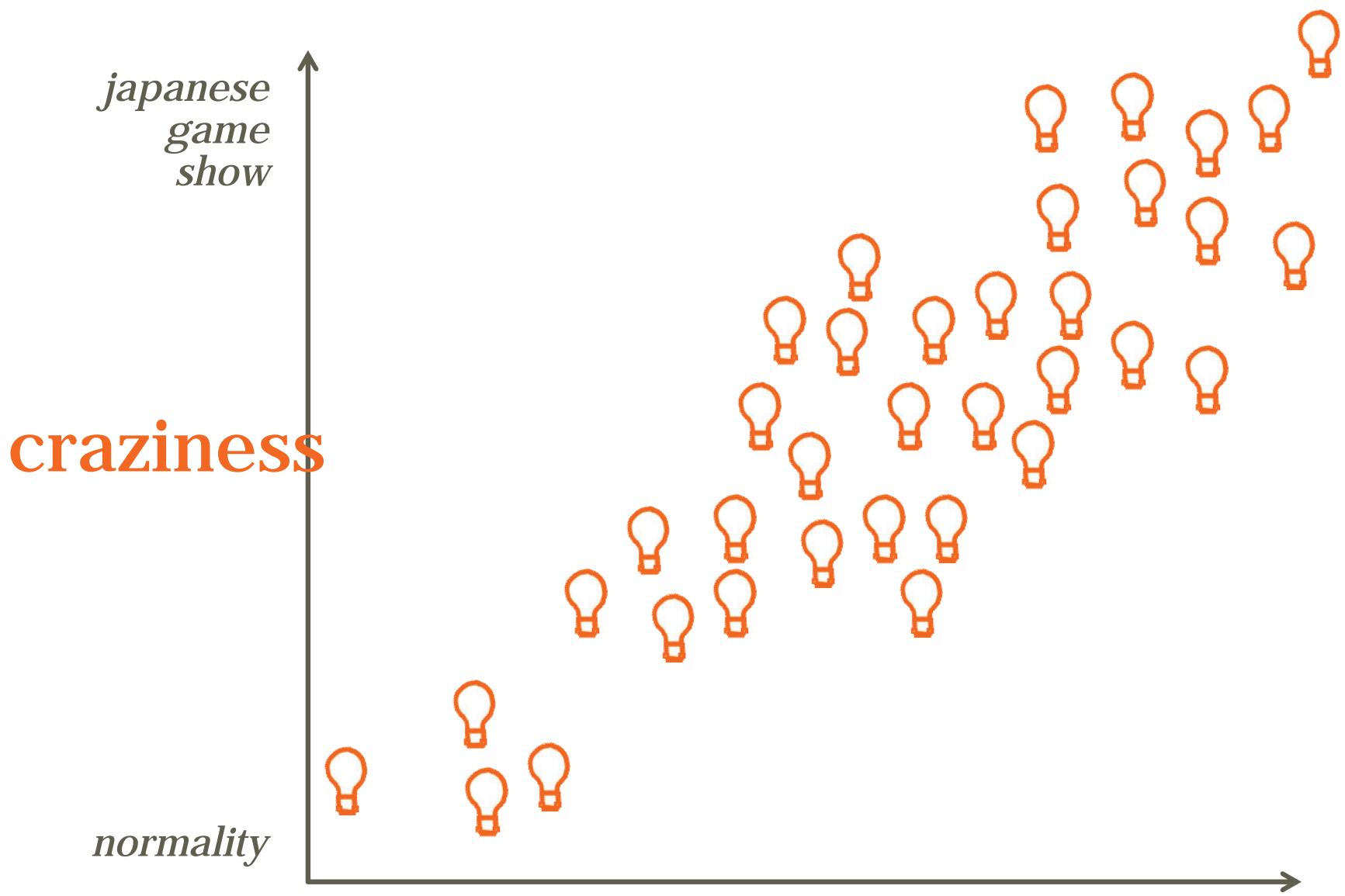
- 1 passion
- 1 potential strength/ skill
- 1 leadership niche
- Commit to one thing you can do after leaving here today





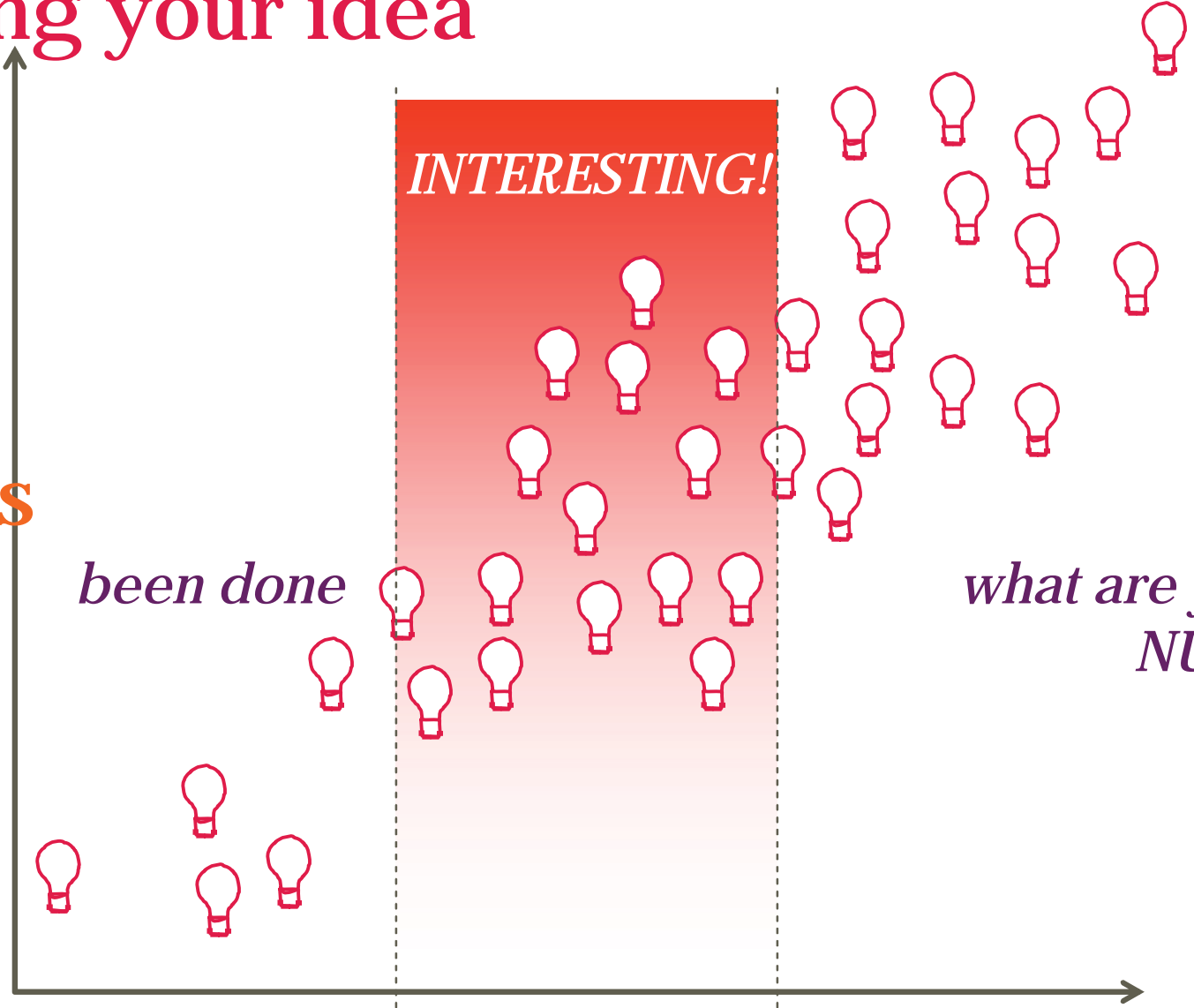






Refining your idea

craziness



been done

INTERESTING!

*what are you,
NUTS?*

time



Effort



Value



+

**PLEASE
DO NOT FEED THE PROBLEM**



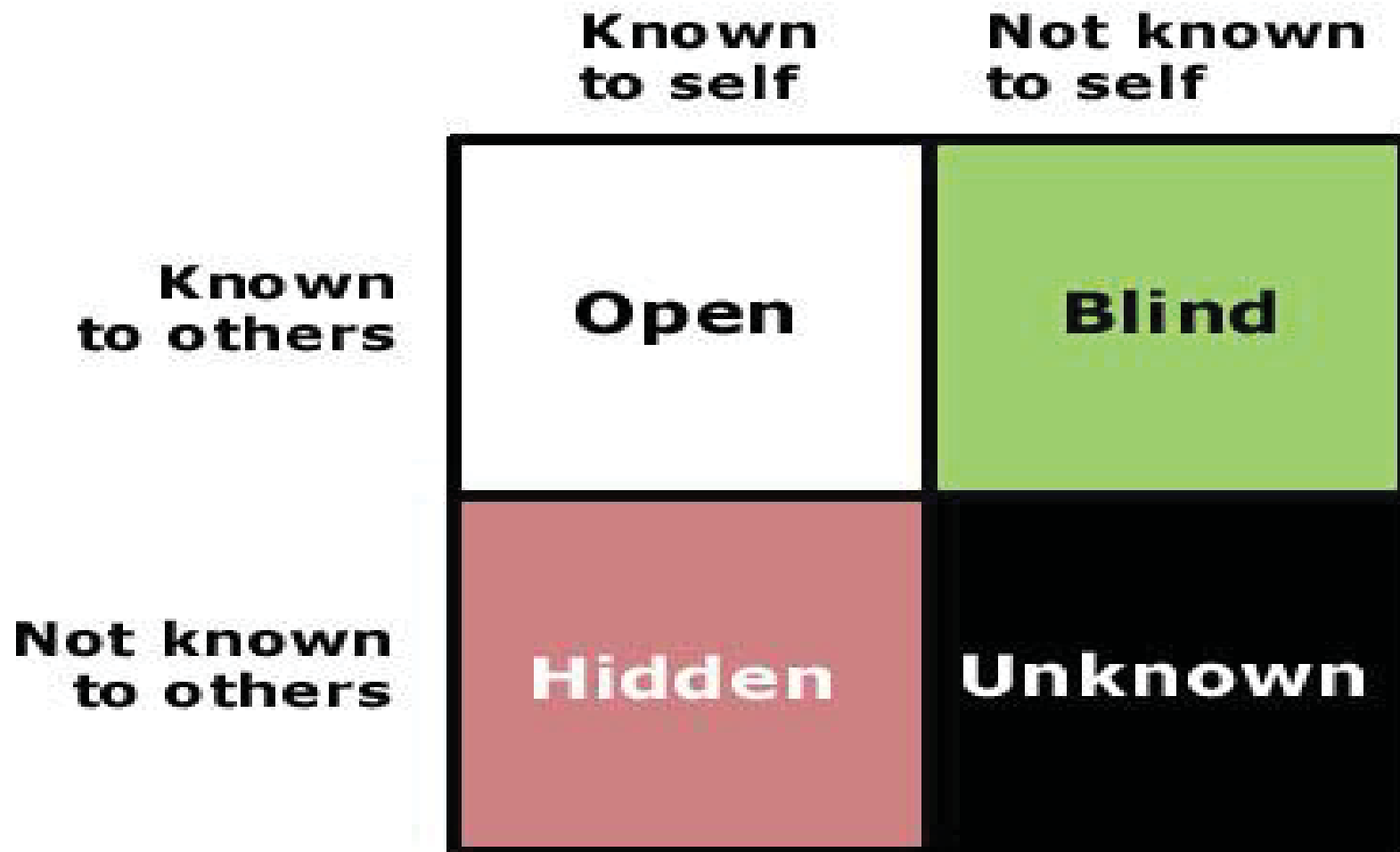


collaboration
is everything



+ What are the major
barriers we face?

The Johari Window



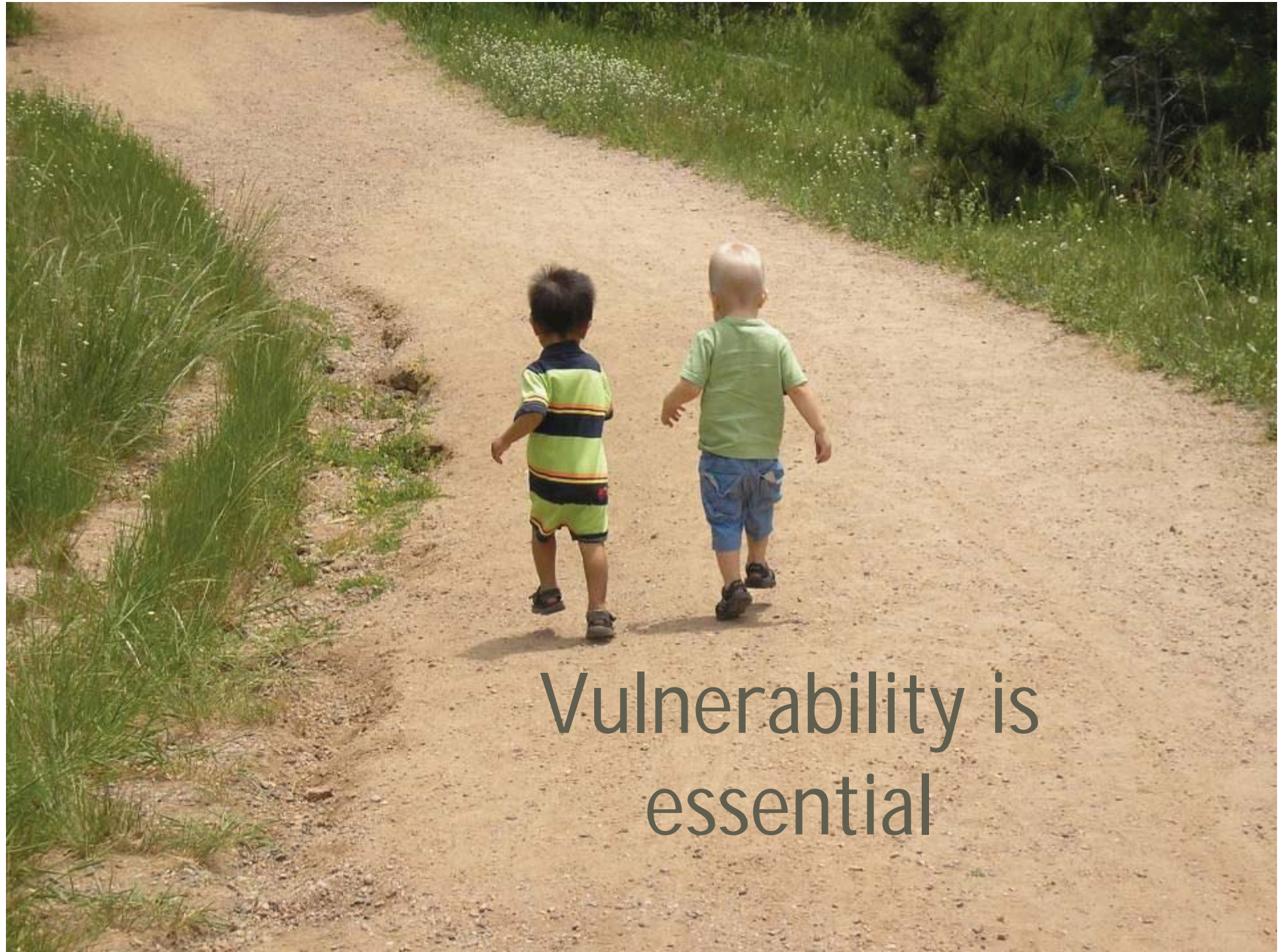






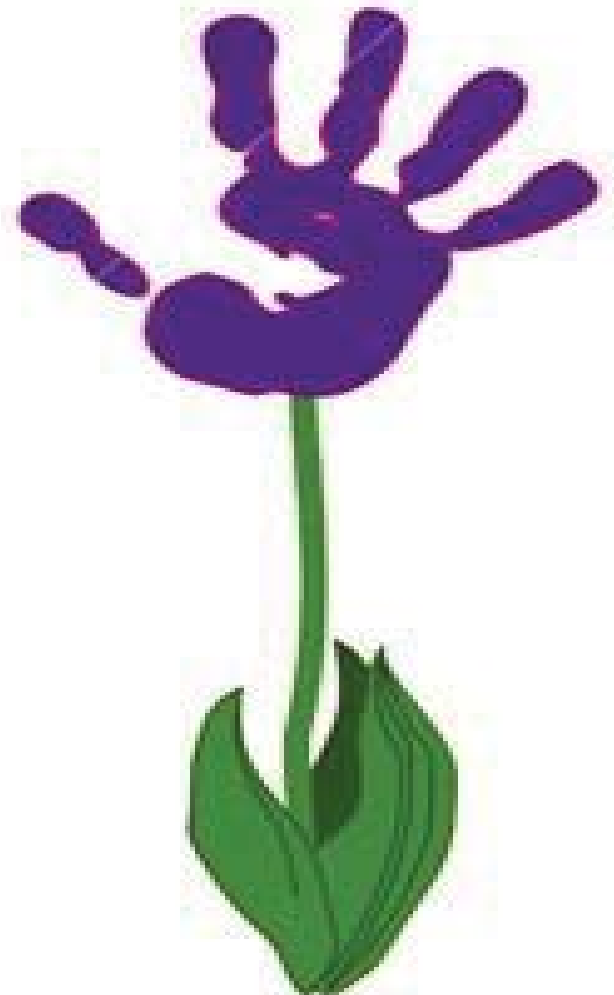
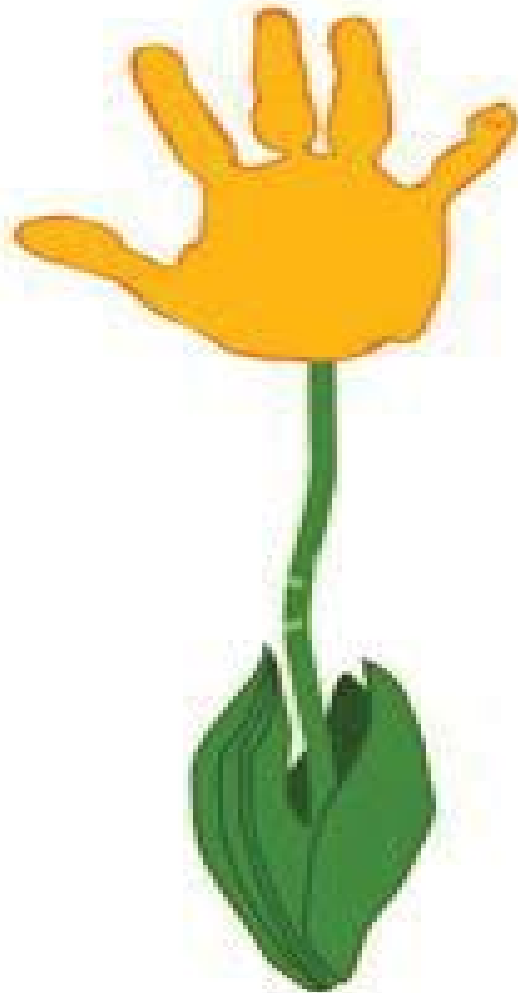
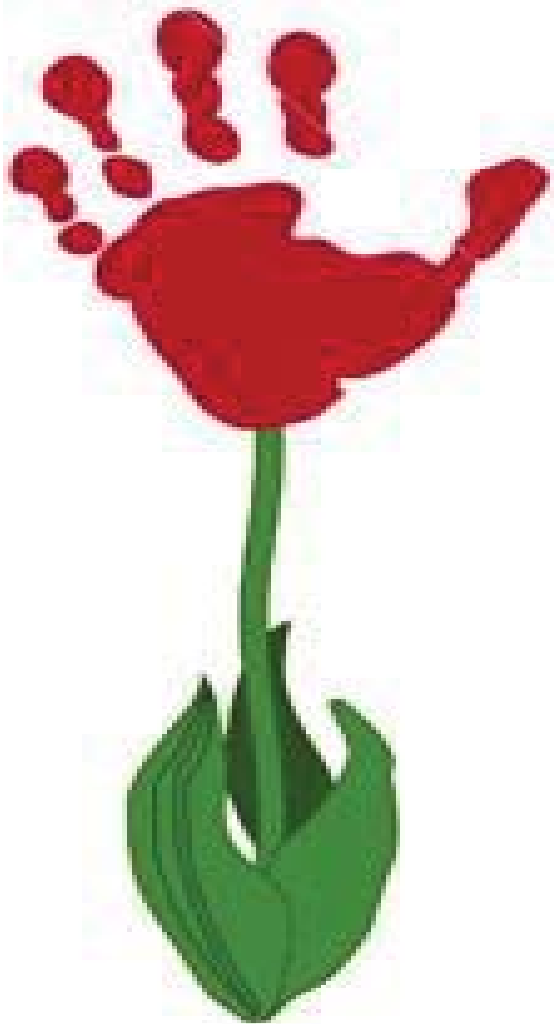
TRUST





Vulnerability is
essential

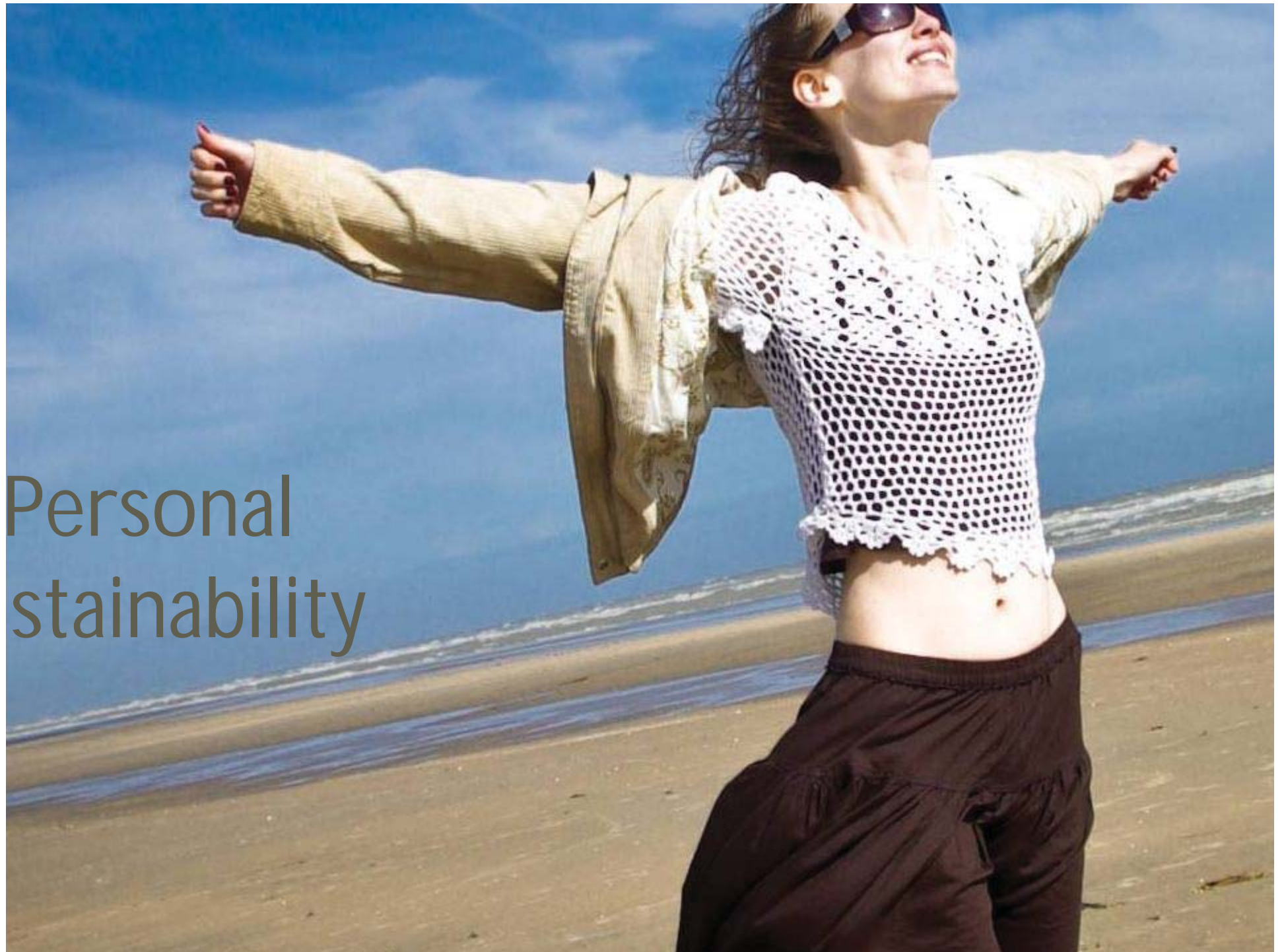
+ Creativity





Response-ability





Personal
sustainability





Questions?

www.csl.org.au